



WEIFANG PALCONN PLASTICS TECHNOLOGY CO.,LTD



PE-Xa pipe size rang



PN1.25MPA

Size(mm)	PALCONN Code
16x1.8	PAP-04-S516
20x1.9	PAP-04-S520
25x2.3	PAP-04-S525
32x2.9	PAP-04-S532



PE-Xb pipe size rang



PN1.25MPA

Size(mm)	PALCONN Code
16x1.8	PAP-07-S516
20x1.9	PAP-07-S520
25x2.3	PAP-07-S525
32x2.9	PAP-07-S532



PN1.6MPA

Size(mm)	PALCONN Code
16x1.8	PAP-07-S416
20x2.3	PAP-07-S420
25x2.8	PAP-07-S425
32x3.6	PAP-04-S432



PN2.0MPA

Size(mm)	PALCONN Code
16x2.2	PAP-07-S416
20x2.8	PAP-07-S420
25x3.5	PAP-07-S425
32x4.4	PAP-04-S432





Cross-linking polyethylene PE-X pipe

Physical Performance Index for PE-Xa pipe:

Term	Unit	Technique Index
Density	g/cm ³	≥0.94
Cross linking degree	%	≥70
Vicat softening point	°C	133
Thermal conductivity coefficient	w/m.k	0.4
Longitudinal reversion	%	≤3.0
Thermal oxidation life	year	>50
Hydraulic resistance performance	Short-term	20°C, hoop stress 12Mpa: 1h,not cracking,no leakage 95°C, hoop stress 4.8Mpa: 1h,not cracking,no leakage 95°C, hoop stress 4.6Mpa: 165h,not cracking,no leakage
	Long-term	95°C, hoop stress 4.4Mpa: 1000h,not cracking,no leakage 110°C, hoop stress 2.5Mpa: 8760h,not cracking,no leakage

Physical Performance Index for PE-Xb pipe:

Term	Unit	Technique Index
Density	g/cm ³	≥0.94
Cross linking degree	%	≥65
Vicat softening point	°C	133
Thermal conductivity coefficient	w/m.k	0.4
Longitudinal reversion	%	≤3.0
Thermal oxidation life	year	>50
Hydraulic resistance performance	Short-term	20°C, hoop stress 12Mpa: 1h,not cracking,no leakage 95°C, hoop stress 4.8Mpa: 1h,not cracking,no leakage 95°C, hoop stress 4.6Mpa: 165h,not cracking,no leakage
	Long-term	95°C, hoop stress 4.4Mpa: 1000h,not cracking,no leakage 110°C, hoop stress 2.5Mpa: 8760h,not cracking,no leakage

EVOH PB oxygen barrier pipe(3-layer)



PN1.6MPA

Size(mm)	PALCONN Code
--	--
20x2.0	PAP-02-S520
25x2.3	PAP-02-S525
32x2.9	PAP-02-S532



PN2.0MPA

Size(mm)	PALCONN Code
16x2.0	PAP-02-S416
20x2.3	PAP-02-S420
25x2.8	PAP-02-S425
--	--



PN2.5MPA

Size(mm)	PALCONN Code
--	--
20x2.8	PAP-02-S3220
25x3.5	PAP-02-S3225
--	--

3&5 Layer PEX-b/PE-RT oxygen barrier pipe



PN1.25MPA

Size(mm)	PALCONN Code
16x1.8	PAP-08-S516
20x1.9	PAP-08-S520
25x2.3	PAP-08-S525
32x2.9	PAP-08-S532



PN1.6MPA

Size(mm)	PALCONN Code
16x1.8	PAP-08-S416
20x2.3	PAP-08-S420
25x2.8	PAP-08-S425
32x3.6	PAP-08-S432



PN2.0MPA

Size(mm)	PALCONN Code
16x2.2	PAP-08-S3216
20x2.8	PAP-08-S3220
25x3.5	PAP-08-S3225
32x4.4	PAP-08-S3232





EVOH PEX/PE-RT/PB OXYGEN BARRIER PIPE

I .Specific Character

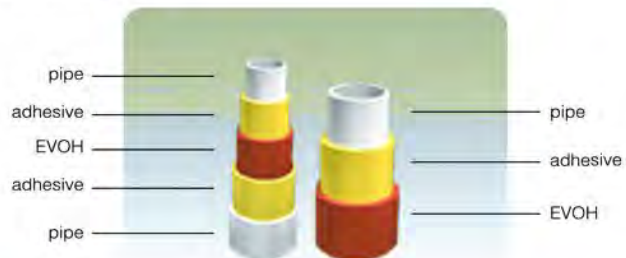
PALCONN EVOH pipe adopts five-layer(pipe-AD-EVOH-AD-pipe) & three layer(pipe-AD-EVOH) co-extrusion technology to extrude the PB,PEX and PE-RT oxygen barrier pipes of diameter range of 16-63mm and use special screw and dies for the oxygen barrier material

II .Recommended Applications:

Palconn EVOH oxygen barrier pipe is recommended for hydronic radiant panel heating systems utilizing water or an antifreeze solution as the heat transfer media.Piping may be installed in concrete,gypsum based lightweight concrete,sand and in or under wood flooring or behind wallboard or plaster.O2 Barrier EVOH may also be used as transfer lines for baseboard heating systems with a maximum operating temperature of 80°

III .Advantages:

- 1.Anticorrosion,especially resistant to electrochemical corrosion
- 2.Low heat dissipation and friction loss
- 3.Thermal memory
- 4.Quiet water flow
- 5.Nontoxic and safe
- 6.Flexibility for easier and faster installation
- 7.Fewer fitting for less chance of leaks
- 8.Lower installation costs
- 9.Wonderful oxygen resistance



IV .DIN4726 Test

Provide condition	40°C humidity of outer space-65% inner space-100%,
Pipe size:	OD20mm ID15mm
Average thickness of EVOH layer:	188 μ M
DIN standard:	< 0.1g/m3/day
Palconn Pipe Texting Result	≐0.003g/m3/day

Anti-UV PEX pipe

I .General introduction:

PALCONN brand anti-UV silane crosslinked polyethylene(PEX-Anti UV) pipe is a newly developed top-tech products by Beijing University of Chemical and PALCONN in cooperation,which adopts the world's most advanced onestep silane crosslinked polyethylene production technology,and produced according to German standards DIN1689297 production,an internal initiative and won the National Award for high-tech products.

II .Advantages:

- 1.Domestic innovative PEX composite pipe has double layer,white lining,has passed the drinking water hygiene standards.The outer layer containing carbon black anti-ultraviolet radiation.The service life is 25 years if pipes being exposed to the outdoor and 50 years used inside.This pipe filled the blank of outdoor UV resistant and heat-resistant pipe;
- 2.Advanced formulation technology and reactive extrusion process ensures the high quality of the production process as well as the products;
- 3.Supporting tube technology:advanced expanding-type pipe fitting ensures the reliability of technical connected.

III .Application:

- 1.Solar facilities systems;
- 2.Drink water system;
- 3.Hot and cold water systems;
- 4.Central air-conditioning system;
- 5.Agriculture and irrigation systems;
- 6.Rain water and swimming pool pipe network system.



IV .Test Index:

Term	Unit	Technique Index
Density	g/cm ³	≥ 0.94
Cross linking degree	%	≥ 65
Vicat softening point	°C	133
Thermal conductivity coefficient	w/m.k	0.35
Longitudinal reversion	%	≤ 3.0
Thermal oxidation life	year	25(outsie),50(inside)
Tensile strength	N/mm ²	20°C19~26 100°C9~13
Elongation at break	%	20°C350~550 100°C500~700
Long time using temperature	°C	-70~+95
Linear expansion coefficient	m/m ³ k	20°C1.4x10 ⁻⁴ 100°C 2.05x10 ⁻⁴
Hydraulic resistance performance	Short-term	20°C,hoop stress 12.0Mpa,1h,not cracking,no leakage
		95°C,hoop stress 4.8Mpa,1h,not cracking,no leakage
	Long-term	95°C,hoop stress 4.7Mpa,22h,not cracking,no leakage
		95°C,hoop stress 4.6Mpa,165h,not cracking,no leakage
		95°C,hoop stress 4.4Mpa,1000h,not cracking,no leakage

PALCONN-PEX-AL-PEX composite pipe

I .Pipe Description:

PEX-AL-PEX composite pipe is composite pipe of five layers,inside and outside layers of which are made of Cross-Linked(PEX),tightly bonded with melt adhesive to the mid-layer of aluminum core which is longitudinally welded in a butt-welded or overlap-welded way,this kind of pipe is the perfect union of metal and the plastic ones

II .Advantages:

- 1.Compared with the metal pipe,the composite pipe has the same strength,easy to bend,reluctant to retain former shape;
- 2.Super properties of high temperature,high pressure and corrosion resistance;
- 3.Smooth inner surface of the pipe reduce resistance to the fluids.The ability to conduct water is 30% more efficient
- 4.Good property of heat preservation,heat conduction coefficient is 0.45W/m.k,which is much less than metal pipes and it can save insulation materials outside the pipe;
- 5.Easy to cut and install;
- 6.Life pan of the composite pipe is more than 50 years

III .Application:

1. Under floor heating;
2. Heating system of Cali duct and wall,the equipment for snow melting in cold regions;
3. Heat and cold pipes for life,solar energy water heater,irrigation engineer in agriculture;
4. Pipes for coal gas and natural gas,air-condition and blower;
5. Pipes for electric wire and cable;
6. Pipes for oil and industrial liquids transportation.

IV .Pipe size range

Overlapped welding

Size(mm)	PALCONN Code
1216	PAP-OW16
1620	PAP-OW20
2026	PAP-OW26
2632	PAP-OW32



Butt welding

Size(mm)	PALCONN Code
1216	PAP-BW16
1620	PAP-BW20
2026	PAP-BW26
2632	PAP-BW32



PEX-AL-PEX & PEX PIPE Compression brass fittings



Straight Nipple Double



Size(mm)	PALCONN Code
----------	--------------

16x16	PAL-PAPF-01
16x20	
18x18	
20x20	
25x25	
25x20	
32x32	

Straight Nipple Male



Size(mm)	PALCONN Code
----------	--------------

16x1/2"M	PAL-PAPF-02
16x3/4"M	
18x1/2"M	
18x3/4"M	
20x1/2"M	
20x3/4"M	
25x3/4"M	
25x1"M	
32x3/4"M	
32x1"M	

Straight Nipple Female



Size(mm)	PALCONN Code
----------	--------------

16x1/2"F	PAL-PAPF-03
16x3/4"F	
18x1/2"F	
18x3/4"F	
20x1/2"F	
20x3/4"F	
25x3/4"F	
25x1"F	
32x3/4"F	
32x1"F	

Wallplate Elbow Female



Size(mm)	PALCONN Code
----------	--------------

16x1/2"F	PAL-PAPF-04
16x3/4"F	
18x1/2"F	
18x3/4"F	
20x1/2"F	
20x3/4"F	

Tee Female



Size(mm)	PALCONN Code
----------	--------------

16x1/2"Fx16	PAL-PAPF-05
16x3/4"Fx16	
18x1/2"Fx18	
18x3/4"Fx18	
20x1/2"Fx20	
20x3/4"Fx20	
25x3/4"Fx25	
25x1"Fx25	
32x3/4"Fx32	
32x1"Fx32	

BRASS



PEX-AL-PEX & PEX PIPE Compression brass fittings

Tee Male



Size(mm)	PALCONN Code
16x1/2"Mx16	PAL-PAPF-06
16x3/4"Mx16	
18x1/2"Mx18	
18x3/4"Mx18	
20x1/2"Mx20	
20x3/4"Mx20	
25x3/4"Mx25	
25x1"Mx25	
32x3/4"Mx32	
32x1"Mx32	

Tee



Size(mm)	PALCONN Code
16x16x16	PAL-PAPF-07
18x18x18	
20x20x20	
16x20x16	
20x16x16	
20x16x20	
20x20x16	
25x25x25	
25x16x25	
25x20x25	
32x32x32	
20x16x20	

Elbow Male



Size(mm)	PALCONN Code
16x1/2"M	PAL-PAPF-08
16x3/4"M	
18x1/2"M	
18x3/4"M	
20x1/2"M	
20x3/4"M	
25x3/4"M	
25x1"M	
32x3/4"M	
32x1"M	

Elbow Double



Size(mm)	PALCONN Code
16x16	PAL-PAPF-09
18x18	
16x20	
20x20	
25x25	
32x32	

Elbow Female



Size(mm)	PALCONN Code
16x1/2"F	PAL-PAPF-10
16x3/4"F	
18x1/2"M	
18x3/4"M	
20x1/2"F	
20x3/4"F	
25x3/4"F	
25x1"F	
32x3/4"F	
32x1"F	

Cross



Size(mm)	PALCONN Code
16x16x16x16	PAL-PAPF-11
18x18x18x18	
20x20x20x20	
25x25x25x25	
32x32x32x32	

Press brass fittings for PEX-AL-PEX pipe & PEX pipe



Straight Nipple Double

Size(mm)	PALCONN Code
16x16	PAL-FP-01
20x20	
25x25	
32x32	
20x16	
25x16	
25x20	
32x16	
32x20	
32x25	



Straight Nipple Male

Size(mm)	PALCONN Code
16x1/2" M	PAL-FP-02
16x3/4" M	
20x1/2" M	
20x3/4" M	
20x1" M	
25x1/2" M	
25x3/4" M	
25x1" M	
32x3/4" M	
32x1" M	



Straight Nipple Female

Size(mm)	PALCONN Code
16x1/2" F	PAL-FP-03
16x3/4" F	
20x1/2" F	
20x3/4" F	
20x1" F	
25x1/2" F	
25x3/4" F	
25x1" F	
32x3/4" F	
32x1" F	



Elbow Double

Size(mm)	PALCONN Code
16x16	PAL-FP-04
20x20	
25x25	
32x32	



Elbow Male

Size(mm)	PALCONN Code
16x1/2" M	PAL-FP-05
16x3/4" M	
20x1/2" M	
20x3/4" M	
25x1/2" M	
25x3/4" M	
25x1" M	
32x1" M	



Elbow Female

Size(mm)	PALCONN Code
16x1/2" F	PAL-FP-06
16x3/4" F	
20x1/2" F	
20x3/4" F	
25x1/2" F	
25x3/4" F	
25x1" F	
32x3/4" F	
32x1" F	



Tee Female

Size(mm)	PALCONN Code
16x1/2" Fx16	PAL-FP-07
20x1/2" Fx20	
20x3/4" Fx20	
25x1/2" Fx25	
25x3/4" Fx25	
25x1" Fx25	
32x3/4" Fx32	
32x1" Fx32	



Tee Male

Size(mm)	PALCONN Code
16x1/2" Mx16	PAL-FP-08
20x1/2" Mx20	
20x3/4" Mx20	
25x1/2" Mx25	
25x3/4" Mx25	
25x1" Mx25	
32x1" Mx32	





TEE

Size(mm)	PALCONN Code
16x16x16	PAL-FP-09
20x20x20	
25x25x25	
32x32x32	
16x20x16	
16x25x16	
20x16x16	
20x16x20	
20x20x16	
20x25x20	
25x16x16	
25x16x20	
25x16x25	
25x20x16	
25x20x20	
25x20x25	
25x25x20	
25x32x25	
32x16x32	
32x20x32	
32x25x20	
32x25x25	
32x25x32	



Wallplate Elbow Female

Size(mm)	PALCONN Code
16x1/2"	PAL-FP-10
20x1/2"	
20x3/4"	
25x3/4"	

Installation Instruction

1.Preparation for pressing

Step1:Installing jaw on to the tool



Step2:Adjusting the pressing tool



2.Preparation for pipe & fittings

Step 1:Pipe Cutting



Step2:Rounding and beveling



Step 3:Inserting



3.Pressing

Step1



Step2



Step3





www.palconn.com



WEIFANG PALCONN PLASTICS TECHNOLOGY CO.,LTD

ADD:YINMA INDUSTRIAL ZONE,WEIFANG,SHANDONG,CHINA

ZIP CODE:261317

TEL:0086-536-8798363

FAX:0086-536-8650536

E-MAIL:info@palconn.cn

WEB:<http://www.palconn.com>